



WHITE PAPER VERSION 5.0

www.growrichcoin.com

All Rights Reserved. Prepared, Designed & Developed By

GROW RICH COIN



TABLE OF CONTENT

INTRODUCTION

PROTOCOL

ARCHITECTURE

TOKENOMICS

ICO & IEO

ECO SYSTEMS

ROADMAP

COMMUNITY

PROMOTIONAL STRATEGY

DISCLAIMER



INTRODUCTION

GROW RICH COIN is the most extensive network. GROW RICH COIN (GRC) is a native token of GROW RICH COIN. It is a Decentralized finance Token which creates customer values and provides more secure transactions and payment systems to all over the world users using Decentralized Technology. Through its portfolio of tools; GROW RICH COIN can soon establish a thriving market for authorized buyers and sellers of artwork and other creative digital goods.

GROW RICH COIN provides a highly authentic decentralized ledger to perform the transactions in the GROW RICH COIN ecosystem. GROW RICH COIN is less economical than the other blockchain networks. It offers 3rd Layer Security System for its end user.

Global : GROW RICH COIN provides and solves worldwide transactions about 100% regardless of issues or law, easing customer satisfaction and creating more customer value.

Smart : GROW RICH COIN is innovative in terms of transactions. Every transaction is done without any 3rd party involvement. GROW RICH COIN uses its blockchain network with the latest art of Technology.

Beginning : Founded in 2022, GROW RICH COIN is a DeFi token that will be used for transactions on our GROW RICH COIN Chain Ecosystem and on our partnering platforms. Our innovation hub will present promising ideas and will help us attain our long-term goal of becoming the sole currency used to cover Digital Finance, Metaverse, travel and e-Commerce costs in the real world.



Why?

The model was implemented in order to maximize our scalability and profitability in the near and far future, particularly thanks to the help of leveraging resources, reductions in management and operating costs and the maximization of our global expansion by centralizing the technology. Everything flows through the GROW RICH COIN Chain System, our strong technology which was designed to connect and automatize the processes of our business lines and partnering platforms.

How?

“The secret to avoiding stagnation, is to create brands that are flexible and can work in several different markets with many different lines of business, for example: travel, E-Commerce, shopping, restaurants, gift cards and boxes, e-Commerce, nightlife and much more. GRC Token and the GROW RICH COIN Chain System are the major programs which support the engine. “

Consumer Demographics:

Young minds, adventurers, the people that don't follow society, millennials that seek new experiences. New Generation increasing target market for Automation Technology at the moment and it represents 30% of our target audience and will represent an estimated 35- 40% of our user base in three years' time.

Gap:

The user decision made for them. We revolutionized this concept so that the choice was up to our system. It is faster, easier, secure and much more dynamic.



Opportunity:

Create an identity: the launch of GROW RICH COIN Chain is a great opportunity to represent what our goals are, what we want to achieve and what we can offer our users in terms of value. The more we establish the brand as a positive presence in the industry, the more chances we'll have to build brand identity and customer loyalty.

Innovations:

In the next Five years, GROW RICH COIN aims to become an innovation hub. All resources will be dedicated to: fresh ideas, new business lines, start ups, creating different interconnected products, websites and applications in order to maximize our profits while also reducing costs. All of our chosen projects will be handled within the same group, with a unified vision. The target is to become a multi-brand company called the Automation Technology, while at the same time implementing GROW RICH COIN Chain and watching it become the standard currency for like Digital Finance, Metaverse, e-Commerce and travel industries.





PROTOCOL

The Technology that gives Opportunity!

Defi (Decentralized Finance) is the aspiration to create this Blockchain network. Defi helps users send their money worldwide easily and securely without third-party interventions. Thousands of people do not send money using banks or other financial institutes. Because of legislation, this is the Gap and motivation to create the Defi Blockchain network where we identify the end user issues and resolve them in a real-time fast, and secure manner.

The GROW RICH COIN network's astounding speed and decentralization make GROW RICH COIN the innovative company in blockchain technology.

Transaction cost: Low cost as compared to other Block chains.

Storage Cost: Low cost of storage to store Dapps (Decentralized Applications).

Supply: Limited supply that creates more value. (Only 2,500,000)

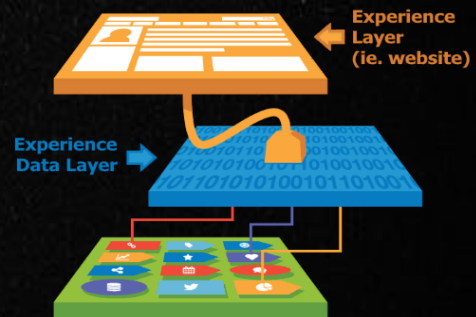




ARCHITECTURE

The GROW RICH COIN system is a decentralized platform, that aims to deliver high performance and scalability. There is an ecosystem of components that make up the GROW RICH COIN platform which can be divided into 5 layers. Each layer forms a function to support the layer above it. This is implemented on the GROW RICH COIN main network through software protocols that make use of API (Application Programming Interfaces) that communicate between layers. In the following section the architectural components of the GROW RICH COIN platform will be discussed.

- # The Hardware Infrastructure Layer:
- # The Data Layer:
- # The Network Layer:
- # The Consensus Layer:
- # The Application Layer:



1. The Hardware Infrastructure Layer

GROW RICH COIN data lies securely stored in a data server. When we browse the web or use any blockchain apps, our machines request access to this data from the server. The framework that facilitates this data exchange is known as the client-server architecture. Block chains are peer-to-peer (P2P) networks that allow clients to connect with 'peer-clients' to make data sharing faster and easier. It is nothing but a vast network of devices communicating with each other and requesting data from one another. This is how a distributed ledger gets created. Each device communicating with another device on the network is a node. Each node randomly verifies transactional data.



2. The Data Layer

GROW RICH COIN data are nothing but a long chain of 'blocks' containing transaction data. When the nodes validate a certain number of transactions, the data is bundled into a 'block,' added to the blockchain, and linked with the previous block of data. The 'Genesis Block' is the first block in the chain and therefore does not need to be linked with any previous block. Instead, the subsequent block is linked with the Genesis block, and the process is repeated every time a new block is added. This is how a blockchain forms and continuously grows.

Every transaction is 'digitally signed' with the private key of the sender's wallet. Only the sender has access to this key, thus ensuring that the data can neither be accessed nor be tampered with by anybody else. This is called 'finality' in blockchain terminology. The digital signature also protects the owner's identity, which is itself encrypted, thus ensuring maximum security.

3. Network Layer

The supporting layer of the platform relies on TCP/IP (Internet). This is also where the nodes and storage devices hold a copy of the blockchain data and its state. Any changes from the APPLICATION and approved by CONSENSUS makes changes to the blockchain state and this is propagated throughout the network.

The GROW RICH COIN Technology itself runs on the memory over the network. It has a persistent connection over the Internet via TCP/IP. All nodes can communicate & discover each other over the network and perform their particular roles as part of the consensus mechanism. When a node is down it does not affect the rest of the network. The GROW RICH COIN platform was meant to be decentralized and fault tolerant. External Data Interfaces interact with the network through an Interoperation Layer which are API endpoints to the Core Layer of GROW RICH COIN .



A distributed storage system is also part of the NETWORK layer. This GROW RICH COIN system allows content to be stored on a decentralized platform that is verified by the blockchain. They access API to read and write data to the distributed storage system over the network. This is also persistent data which resides across the network and not just in one storage location.

Providing the entire physical & logical storage of data can come from different types of devices. This includes the infrastructure of the Internet (routers, network gateways, name servers etc..) and various types of servers (data centers, cloud providers, directly connected nodes). This forms the very foundations for the ecosystem. The data itself is stored across the network on various full nodes, which maintain a copy of the entire GROW RICH COIN blockchain.

4. Consensus Layer

The Core layer deals with the consensus protocol on the network and a unique Delegated Proof-of-Authority (dPOSA) to meet the network's demands. This is referred to as the GROW RICH COIN Consensus Mechanism (SOCM). hosting a dPOSA consensus protocol helps on lowering energy consumption, increasing efficiency and transaction speeds. At this layer blocks are validated and added to the blockchain.

(a) Light Nodes

Light-weight or Light Nodes Are mobile devices & they will use blockchain mostly for payments. They connect to the network via Master nodes.

(b) Master nodes

These provide special services for which they will be rewarded by the network. The following are the main functions they perform to be servers for light nodes providing them access to the blockchain and providing API access to the network. To vote for network modification, equally to Super nodes.



To support and process micro payments and payment tunnels, protecting the main net from myriads of small transactions generated by payment services and supporting regular repetitive payments.

To provide and maintain abstract (custom) transactions, allowing to create private networks inside the public one.

To become an additional layer of blockchain consensus – master nodes layer can serve as additional verification layer, running own POSA consensus (similar to FFG technology of Casper project) in parallel with dPOSA of Super nodes layer.

(c) The GROW RICH COIN Explorer

The Blockchain Explorer nodes for GROW RICH COIN uses an API which allows client software applications to connect to servers that provide blockchain information. Users can access the blockchain explorer from the URL <https://ozonescan.com> These servers are provided as part of the CORE layer. These are web servers that run a database that provides information from the blockchain.

These nodes do not execute query code on the blockchain so they are offered without fees. Any user can access the block explorer website and run a query.

This deals with looking up balances in digital wallets, transactions and other simple tasks that don't require a change in the blockchain state. The following details are provided:

Blocks

Height, Age and Block Producer (shown as address) information
Transactions. Transaction Hash, Block Height, Created, Address, Contract Transfers.

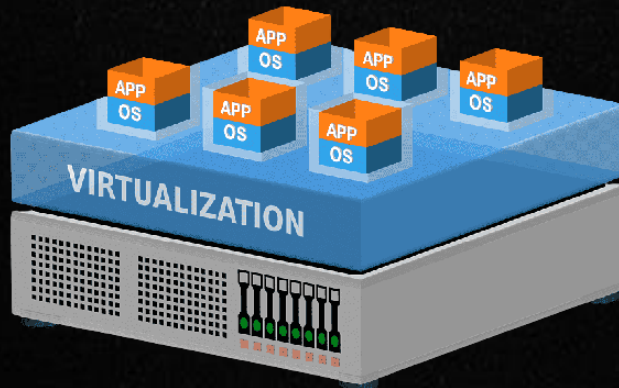
Transaction Hash, Block Height, Created, From, To, Value Accounts
Address, Supply, Balance Statistics.

Top Addresses, Transfers past hour, Transactions past hour, Average Block Size and other indicators will be added Live transaction view



a. The GROW RICH COIN Virtual Machine

Another CORE layer component is the GROW RICH COIN Virtual Machine or BGVM. Nodes on the network run an instance of the BGVM when executing code. Each unit of computation is charged a fee for processing it on the GROW RICH COIN platform. The BGVM is a lightweight, Turing complete virtual machine developed for the GROW RICH COIN ecosystem. The goal is to provide millions of global developers with a custom-built blockchain system that is efficient, convenient, stable, secure and scalable.



BGVM connects seamlessly with the existing development ecosystem and supports dPOSA. It is initially compatible with the BGVM (GROW RICH COIN Virtual Machine) environment so that instead of learning a new programming language, developers can develop, debug, and compile smart contracts in a Remix environment using Solidity and other languages.

Once you've built and uploaded your smart contract to the main net, it will be executed on the BGVM of the SN (Super node) node to be isolated from external connections.



b. The following are the features of the BGVM

BGVM adopts a lightweight architecture with the aim of reducing resource consumption to guarantee system performance.

Out of security reasons, transfers and smart contract cost only bandwidth points, which exempts GROW RICH COIN from being attacked similar to global shield for its mode of safety transaction. The bandwidth model charges computation on the basis of bytes and not per instruction of code. Stability of bandwidth consumption is achieved while the cost of each computational step is fixed.

By connecting seamlessly to existing development ecosystem, higher efficiency can be achieved by Developers. Needless to learn a new programming language, they can use mainstream programming languages for smart contracts such as Solidity to develop, debug and compile smart contracts in the Remix environment, which greatly reduces development costs.

Due to BGVM's bandwidth setup, development costs are reduced and developers can focus on the logic of their contract code. BGVM also offers all-in-one interfaces for contract deployment, triggering and viewing, for the convenience of developers.

5. Application Layer

These are the applications that run on top of the GROW RICH COIN platform. The code is written supported to DApp (Distributed Applications), digital wallet or to a smart contract using RPC (Remote Procedure Calls) that reference API that communicate with the other layers. Code execution is performed by the OZONE Physical servers on nodes throughout the network.



(a) DApp (Distributed Applications)

Developers can create their own applications on top of the GROW RICH COIN platform. Any DApp can interact with GROW RICH COIN Technology via lightweight JavaScript library or using gRPC API natively (many supported languages Java, Go, Python, C++, etc.). There will also be support for JiT & Web Assembly for developers.

(b) Wallet

Developer may generate new accounts by using Meta Mask wallet.

(c) Smart Contracts

Smart contracts on GROW RICH COIN are executable code contracts written in Solidity are also supported. These contain conditions which are a unit of computation on the GROW RICH COIN network that affects the blockchain when executed.

Through an Interoperation Layer, the code is executed across nodes by the BGVM. The compiler translates the smart contract into byte code readable and executable on the BGVM. A virtual machine processes data through opcode, which is equivalent to operating a logic of a stack-based finite state machine. The BGVM accesses blockchain data and invokes an External Data Interface through the Interoperation layer.





TOKENOMICS

Total Supply		2,500,000
Token Name		Grow Rich Coin
Symbol		GRC
Token Type		Native
Initial Supply		500,000
Dex Liquidity		23.25%
Core Team		5.50%
Exchange		31.75%
Gaming		14.25%
Marketing & Promotion		5.75%
Airdrop		2.50%
Defi		6.75%
Virtual Property		10.25%
ICO Starting Price		50 USDT
Maximum Supply		2,500,000





ICO & IEO – Use of Funds

It is time to continue building all of our projects and to scale up globally. In order to reach this level, it is necessary for the company to organize its structure, continue to improve the technology behind the system and dedicate resources to marketing.

I.C.O

INITIAL COIN OFFERS

50 USDT – 1 ST October 2022 To 15th October 2022.

I.E.O

INITIAL EXCHANGE OFFERS

10% Additional (Promotional Incentive)

25th October 2022 To 30th November 2022.





ECO SYSTEM

Use GRC Token to pay for our utilities like Defi Application, Metaverse, Travel & e-Commerce activities on our platforms, global premium partners and earn rewards.

GRC is becoming the standard Token to use for most of your daily needs in the real world. You will be able to link your account to the app for easier access and pay for everything through GRC Token.

META GRC

Meta GRC Is the worldwide Program of Stacking program on the Binance Blockchain network.

GRC CHAIN

World's Most Updated 5th Generation Block Chain with Top level Security System, with Low Gas Fee for crypto creator and lovers.

GRCEX

Established Crypto Exchange where buying or selling crypto is easy, and all transaction fees pay in GRC Tokens.

ECO-WALLET

ECO-WALLET is a decentralized crypto wallet made for every crypto lover, Its transaction fee is very low with full access by the user.

NFT WALL

NFT Wall is the world's most futuristic market that helps to trade NFTs.

GRCPAY

GRC Pay is a payment system through which people send and receive crypto.



GRC STORE

GRC Store is an online e-Commerce store where people can buy or sell commodities with GRC tokens.

GRC UTILITY

GRC Utility is a utility-based service where users pay their subscription bills like credit cards and electricity bills using GRC tokens.

GRC GAIN

GRC Gain Using crowdfunding and the staking protocol, the GRC GAIN financial platform was created as a unique Crypto Smart Contract ROI.

META GAME

Meta Game GRC is powering up the Metaverse-based game full of adventure and opportunities.

GRC SMILE

GRC Smile is a kind of social media application that is based on daps.

WILD CARD

Wild Card is a card that accepts crypto payments in ATMs. through every transaction you get reward points.

GRC CRYPTO ACADEMY

GRC provides blockchain knowledge and awareness to all people worldwide.





GRC FLY

Fly across the globe with ease. Book your travel tickets online using GRC directly from your digital wallets and enjoy rewards on every transaction.

GRC VACATION

GRC Vacation is a portal that provides rewards during vacations.

DIGI-CLOUD CONNECT

A next generation video conferencing platform where all crypto lovers share their thoughts during video calls.

GRC META-TUBE

A next generation decentralized video sharing platform, where users can watch, like, share, comment and upload their own videos, specially designed to crypto lovers, investors, leaders and traders.

GRC SAFE-TRADE

World's First Unique Crypto Trading Insurance platform that allows users to get insurance on their investment. GRC SAFE-TRADE reimburses up to 90% of the losses. Buy your insurance plan via GRC Tokens Only.

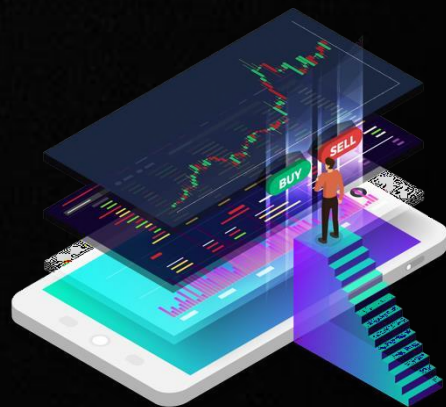
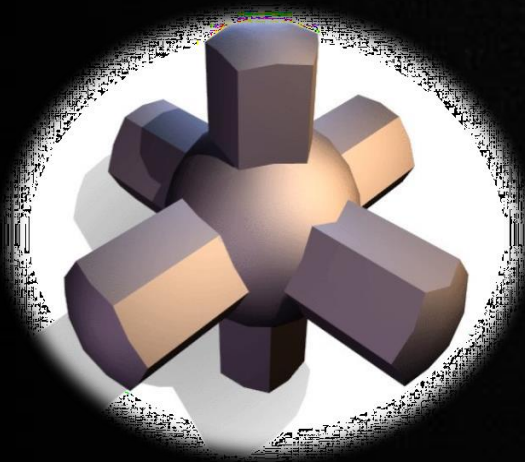
GRC REALITY

World's First Crypto Real Estate platform that allows Sellers and Buyers to interact and trade using GRC Tokens and get reward points.



GRC NATURE

GRC NATURE is involving space related inventions, it invites creators, developers who has unique idea for futuristic services in the help of nature. They will be given placement and rewarded.





ROAD MAP

Q2 2022

Inception of GROW RICH COIN Concept.
Analysis of NFT Marketplace, NFT Cryptocurrency and Game Markets.
Acquiring and establishing the experts for CORE TEAM.
Establishing the Advisory Panel.
Delineating the Project Blueprint of GROW RICH COIN .
Announcement of GROW RICH COIN .

Q3 2022

Initiation of Website & Software Development.
Initiation of Platform Development.
Delineating the Business Blueprint of GROW RICH COIN .
Initiation of delineating entire GROW RICH COIN Eco-system.
Complying BEP-20 Token Standards.
Development of Marketing Strategy for GROW RICH COIN .
Acquiring funds from hedge-funds.

Q4 2022

GROW RICH COIN Website goes live on web.
Running tests to check the functionality of the Platform.
Completion of Website.
Team Skating.

Q1 2023

Initiation of delineating Visual Art.
Phase 1 is Live.
Initiation of Gaming Platform.
Publishing the White Paper.





Q2 2023

Phase 2 is live

Launch of GROW RICH COIN Merchandise

Publishing the Press release

Listing GRC Token on leading price tracking websites

Q4 2023

Listing GRC Token on leading Crypto Exchanges

Launch of GRC Wallet

Lunch of GRC Game Phase 1

Phase 3 is live

Q1 2024

Phase 4 is Live

Launch of GRC Game Exchange

Launch of GRC Game Phase 2

Initiation of Web 3.0

Q2 2024

Launch of GRC Tube

Launch of NFT Collection of GROW RICH COIN

Initiation of GRC Metaverse





At GRC CHAIN, we realize that a strong community is one of the most vital components of any successful project. A strong community helps:

- # Push exposure of the project
- # Guide potential investors to feel comfortable to enter the project
- # Community members to feel at home and valued within the project
- # Create a happy space, for likeminded people, to be a part of something special.

At GRC chain we always look for ways to give back to our incredible community. We will do various giveaways and provide other incentives for community members to get involved in growing project visibility. Raising awareness of the space that has given us and our community endless opportunities is paramount to the long-term values here at GRC CHAIN. We believe it should be at the forefront of every project within the space to work towards, as it will only lead to greater opportunities for everyone involved within the space. We all have a part to play.





PROMOTIONAL STRATEGY

Partnerships With International Influencers

We will be partnering with over 100 Influencers promoting GRC CHAIN on Telegram and Twitter. Throughout our journey, our partners will continue updating their audience on the successful steps we are taking. The team are now building a strategic marketing plan with a professional team. The plans moving forward will include social media promotion including YouTube, Facebook, Instagram, Twitter, Telegram etc. Commercial advertisements on billboards and television across the globe are also part of the plan.

To reach out to a global audience, we aim to be partnering with international ambassadors from all over world. The AUTOMATION TECHNOLOGY team will replicate the original successful launch strategy and apply that strategy to a larger international crypto audience by partnering with international influencers with active channels in the crypto, gaming, modelling and lifestyle communities. Our influencer partnerships will have the option to promote the GRC Token, NFT collections and merchandise.

The larger brand of the AUTOMATION TECHNOLOGY project will reach far beyond the initial DeFi Token community that we have started from. The team's focus since the launch of GRC CHAIN is about connecting all fans of the Metaverse innovation together.

FREQUENTLY ASKED QUESTIONS

Q: Who is Behind the GRC Token?

A: AUTOMATION Technology introduces the GRC Token network. It is a fintech company that provides all types of Digital solutions.



Q: Where can I buy GRC Token?

A: you can buy it form marketplace very soon though in ICO mode you can book on www.growrichcoin.com

Q: What are your marketing plans?

A: For more information about marketing, please ask in the official telegram chat:

<https://t.me/growrichcoin.official>





DISCLAIMER

This paper is produced for educational and informational purposes only and is not intended to be used as a financial promotion. No information, data, or analysis presented are intended to form the basis of any investment decision. Nothing in this paper should be construed as an offer or inducement to engage in any form of investing activity

This paper is not a prospectus, invitation, inducement, or proposal for investment, nor is it meant to be a sale or issuance of securities, interests, or assets. The information in this document is provided in good faith. AUTOMATION TECHNOLOGY expressly disclaims any and all responsibility, and Recipients expressly waive all claim for any direct or indirect loss or damages of any kind (whether foreseeable or not) arising directly or indirectly from

- (i) reliance on any information contained in this document or any information made available in connection with any further inquiries,
- (ii) any error, or inaccuracy in this document,
- (iii) any action resulting therefrom or
- (iv) usage or acquisition of products.

This disclaimer applies notwithstanding any default, lack of care or negligence. AUTOMATION TECHNOLOGY reserves the right to amend, alter, or correct this document at any time without warning or incurring any duty or liability to any receiver. This contract does not attach AUTOMATION TECHNOLOGY, nor does it express any rights, obligations, conditions, performance, covenants, promises, or warranties on behalf of AUTOMATION TECHNOLOGY to the recipient, nor does it establish any relationship between META and any Recipient or other party.



THANK YOU

Website - www.growrichcoin.com

Twitter - [growrichcoin](https://twitter.com/growrichcoin)

Facebook - [growrichcoin](https://www.facebook.com/growrichcoin)

Instagram - [growrichcoin](https://www.instagram.com/growrichcoin)

Telegram - [growrichcoinofficial](https://www.telegram.com/growrichcoinofficial)